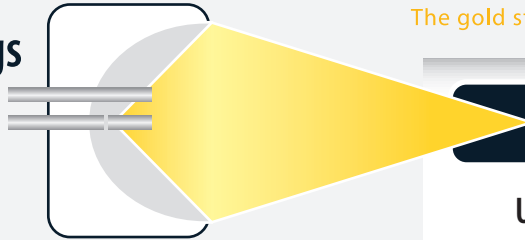


# Types of Shock Wave Therapy

Not all shock wave is created equal

## Electrohydraulic

- True shock wave at all energy settings
- High peak pressure
- Original gold standard shock wave technology – long-term reliability



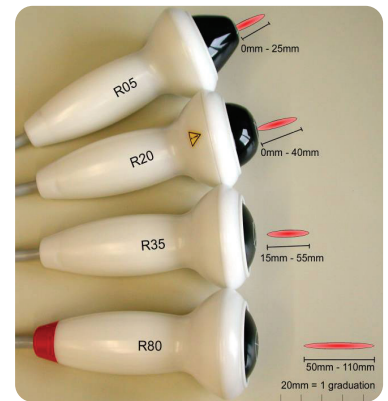
## VersaTron®

The gold standard in shock wave healing

### FOCUSED

Up to **110mm**  
penetration (40 mm in dogs)

Deeper than any other device



### Large focal area



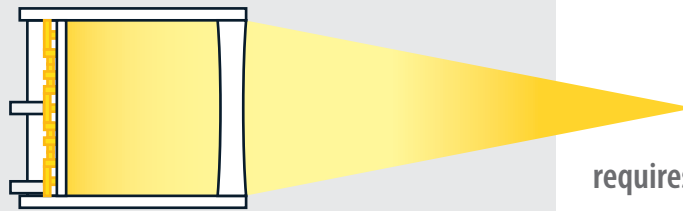
ideal for treating orthopedic conditions in animals



**1** VersaTron® is the **ONLY** studied focused, electrohydraulic system on the market

## Electromagnetic

- Loud speaker effect
- True shock wave at only high energy setting
- Lower penetration depth limits treatment opportunities



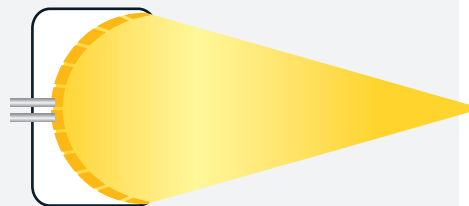
### Small focal area



requires many more pulses to deposit energy

## Piezoelectric

- Mechanical vibrating of focused crystals
- True shock wave at only high energy setting



### Much Smaller focal area



## Radial

- Does not produce a true shock wave, but a mechanical pressure wave
- Pneumatic hammer effect
- Penetrates to 5mm only – for superficial indications (unfocused energy dissipates at surface)